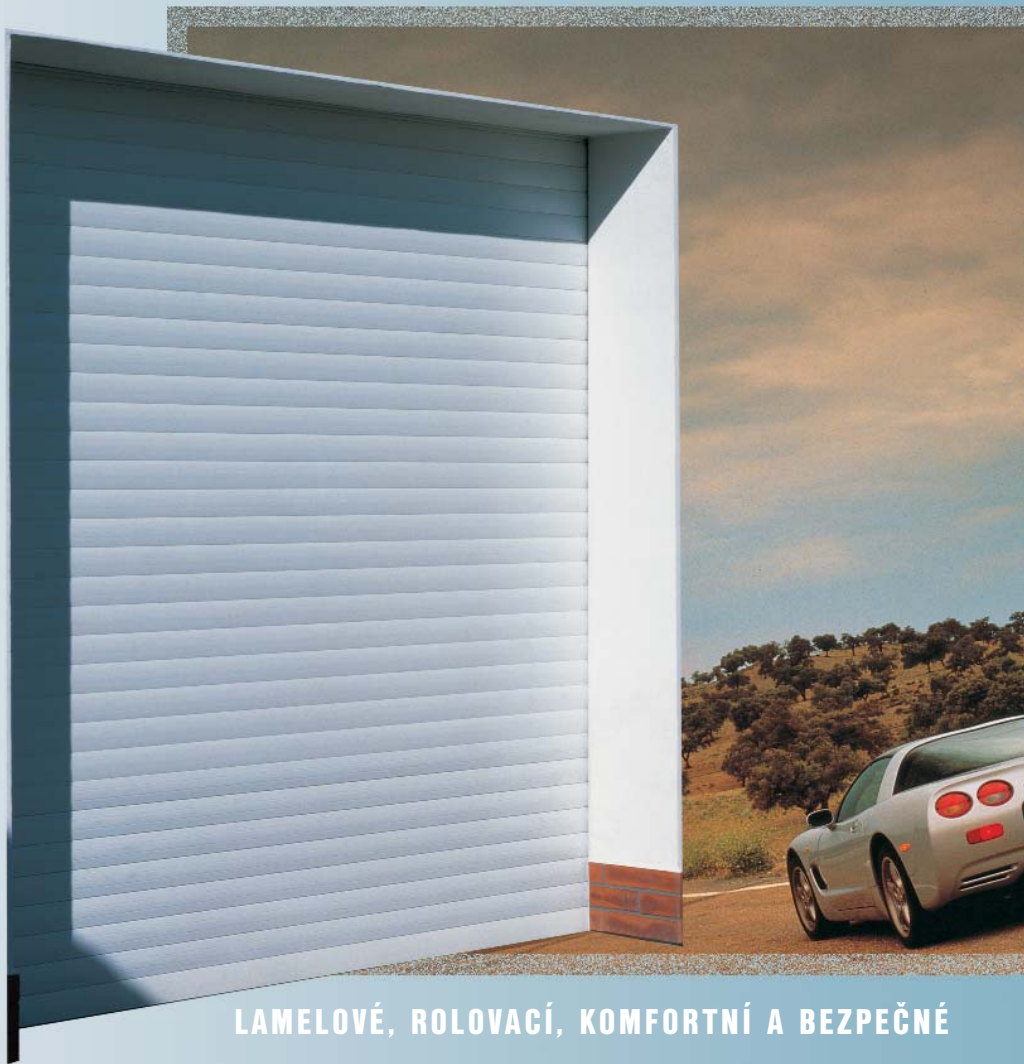


garážová vrata bezpečnostní mříže



LAMELOVÉ, ROLOVACÍ, KOMFORTNÍ A BEZPEČNÉ



www.systra.cz

Product Systra no. 200 - slats Al 37mm

Maximum width 250 cm, maximum area 5,5 m².

Slats 7 x 37 mm, guiding rails acc. to the installation method, mostly 22 x 53 and 22 x 29 mm.

Material: aluminium slats filled with foamed PUR, others of aluminium alloy.

Colour: white or brown, slats white, brown, beige, silver, grey, bronze, mahogany, creamy, snow white.

Product Systra no. 200 - PVC slats 37mm

Maximum width 200 cm, maximum area 4 m².

Slats 8,5 x 37 mm, guiding rails acc. to the installation method, mostly 22 x 53; 22 x 29 mm.

Material: slats of PVC, others of aluminium alloy.

Colour: white or brown, slats white, brown, grey, beige..

Product Systra no. 237 - slats 37mm of extruded aluminium

Maximum width 300 cm, maximum area 8 m².

Slats 9,5 x 37 mm, guiding rails acc. to the installation method, mostly 22 x 53 and 22 x 29 mm.

Material: slats of extruded aluminium, others of aluminium alloy.

Colour: white or brown, slats white, brown, elox.

COMMON DATA: (for products no. 200 Al, 200 PVC, 237)

The width is defined including the guiding rails, the height is defined including the box.

Supporting components: side consoles (shaft support), guiding rails (if they support the side consoles).

Basic version: manual control by cord or strap

box acc. to the installation method - aluminium for additional installation, or box of polystyrene and woodcemaïr for installation in the carcassing.

Extra version: manual control by crank, electric drive (220 V, input cca 100 W)

with button control, group control, remote control, additional locks.

Fixing: by bolting of the guiding rails and eventually of the box in the window frame or in the lining.

Product Systra no. 200 - K, 237 - K

This is combination of roll-up shutter (product no. 200 and 237) with roll-up insect screen.

Maximum width 200 cm, maximum height 210 cm. The width is defined including the guiding rails, the height is defined including the head and bottom box.

Material: aluminium - bottom box, glass fibre - screen

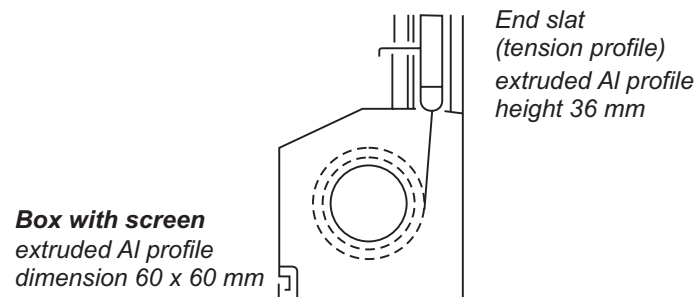
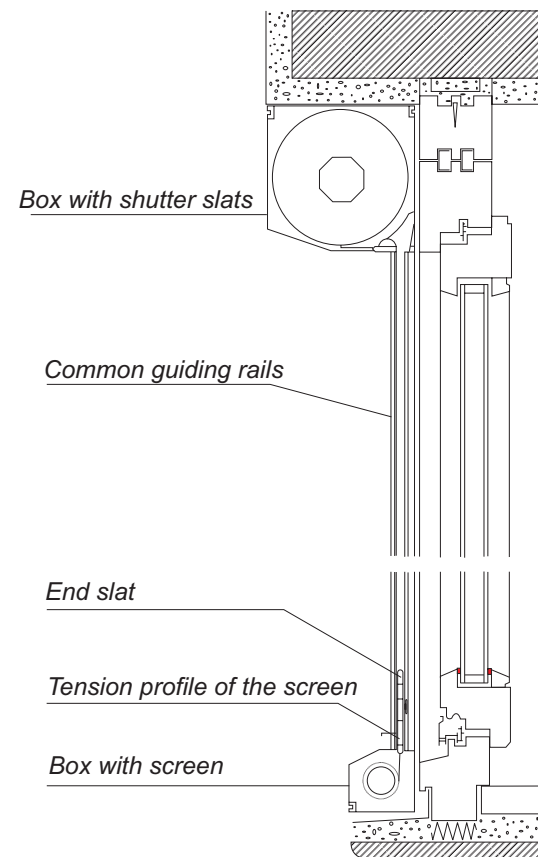
Colour: white, screen - grey

Screen rolling: on the shaft with the spring mechanism with adjustable tension

Functions: 1. end slat (tension profile) of the screen is connected with the bottom slat of the shutter - by rolling the shutter up, the screen is unrolling and vice versa.

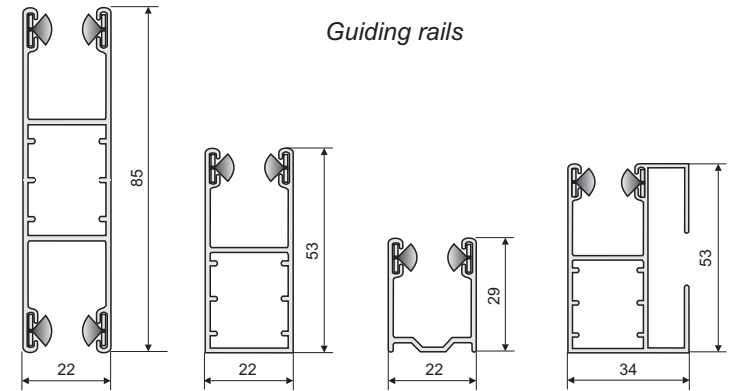
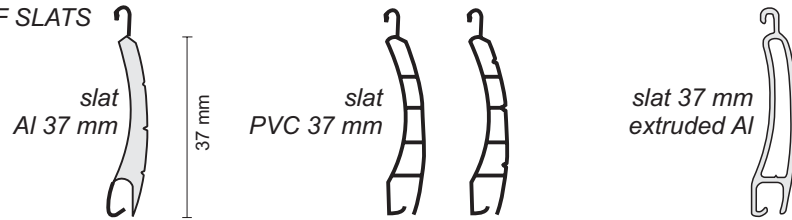
2. end slat is not connected - the shutter works separately, the screen is rolled in the box.

Connecting of the screen and shutter profiles: by a simple turning of 2 hooks in the end slat of the shutter by 90°.

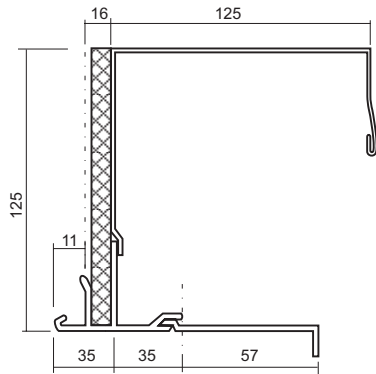




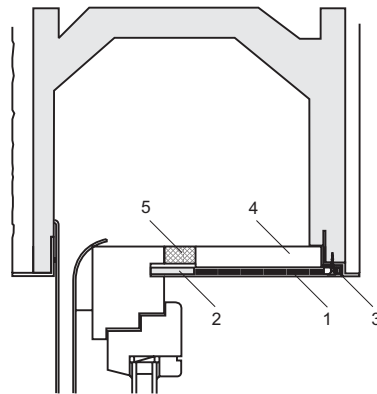
TYPES OF SLATS



Example of 3-parts box with woodcemair plate

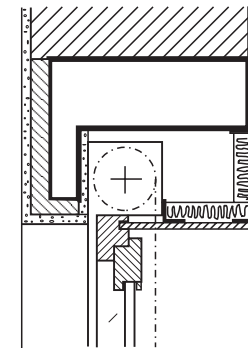


Example of built-in box - thermal insulated



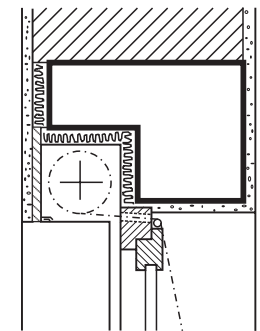
Box dimensions (mm)	Max. shutter height (cm)
160 x 125	105 (shaft 40mm)
172 x 137	145 dtto
185 x 150	180 dtto
200 x 165	225 dtto
215 x 180	290 dtto
205 x 205	342 (shaft 60mm)

1. Cover (current width 18, 22 and 27 cm)
2. Springy element with styropore filling
3. The shutter cover adjoins to the shutter rabbet, where it is tight and permanently screwed
4. 20 mm styropore layer of the hard foam
5. New type of sealing from stable-elastic foam (between the styropore and the window frame)

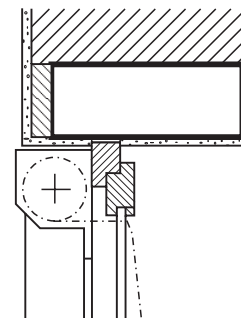


installation in a new building rolling "inward" with woodcemair or polystyrene box

INSTALLATION EXAMPLES (solved individually)

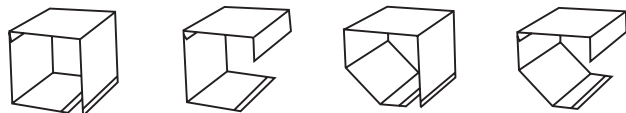


installation in a new building rolling "outward" with box from extruded Al and woodcemair



installation to an existing window

Boxes - examples of shapes



Box dimensions (mm)	Max. shutter height (cm)
125 x 125	105 (shaft 40mm)
137 x 137	145 dtto
150 x 150	180 dtto
165 x 165	225 dtto
180 x 180	290 dtto
205 x 205	342 (shaft 60mm)



Dálkové ovládání

Spínač do interiéru

Nouzové ovládání kloubovou klikou

Hliníkové lamely 77 mm